

Serv-U has been designed to be simple to configure with the flexibility and control you require to easily share files with others under the best security possible. This Quick Start Guide helps you install the server, create your first domain, and add a user account to the new domain. Once you have completed these simple steps, you will be able to connect to your new file server and start transferring files!

Installation

If you are installing Serv-U for the first time, simply follow the instructions on the installation screens to choose the install directory and configure any desktop shortcuts for quickly accessing the server. You may also choose to install Serv-U as a system service, meaning that Serv-U is automatically started when Windows is started - before any user logs on to the machine. This is useful if Serv-U is run on a dedicated server machine that doesn't regularly have an interactive user session logged on to it. If Serv-U is not installed as a system service, it needs to be manually started after logging in to Windows.

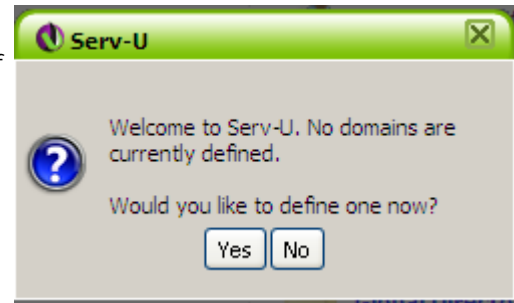


If Serv-U is being installed over an existing Serv-U installation, we recommend creating a back-up of your original installation folder first. While Serv-U can be safely installed over any existing installations and performs any necessary upgrades to data files and binaries, it is considered good data management practice to backup critical components before upgrading them. If the installation being upgraded is older than version 7.0, you are also prompted with a dialog pointing out some of the critical changes made after version 6 and how these changes affect your administration of the Serv-U File Server.

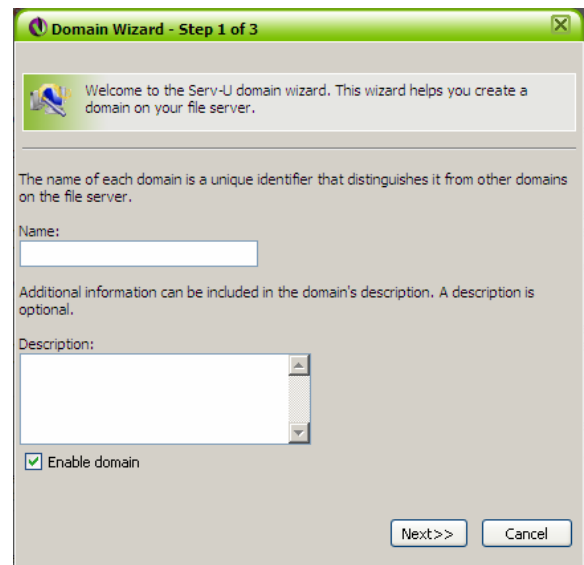
Once installation is complete, the Serv-U Management Console is started. If you chose not to have the Serv-U Management Console started after installation, you can always launch it by double-clicking on the Serv-U icon in your system tray, or right-clicking it and selecting the "Start Management Console" option.



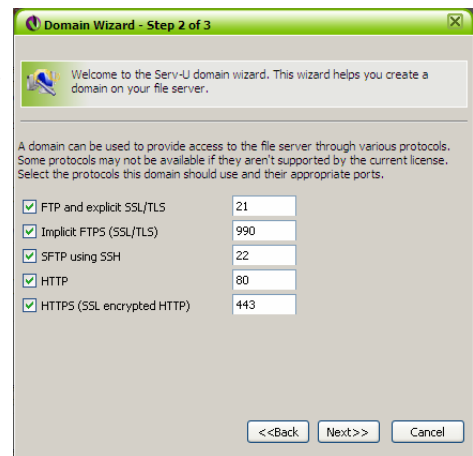
Once the Management Console has finished loading, you are prompted if you would like to create a new domain if no domains are currently present. Clicking **Yes** starts the domain creation wizard. This wizard can be run at any time by clicking on the **New Domain** button found at the top of the Management Console and in the **Change Domain** dialog, which is accessible from any page within the Management Console. There are 3 simple steps to creating a new domain on your Serv-U File Server.



Step 1: The first step is to provide a unique name for the domain. The domain's name is not visible to any of its users nor does it affect how the domain is accessed by others. It is simply an identifier for the domain to make identification and management of the domain easier for its administrators. The name must also be unique so that Serv-U can distinguish it from other domains on the server. You can also provide any other descriptive comments for the domain in the space provided for the description. By default, the domain is enabled and accessible to users. If you would like this domain to be temporarily unavailable to users while you are configuring it, uncheck the **Enable Domain** box. Click **Next** to continue creating your domain.

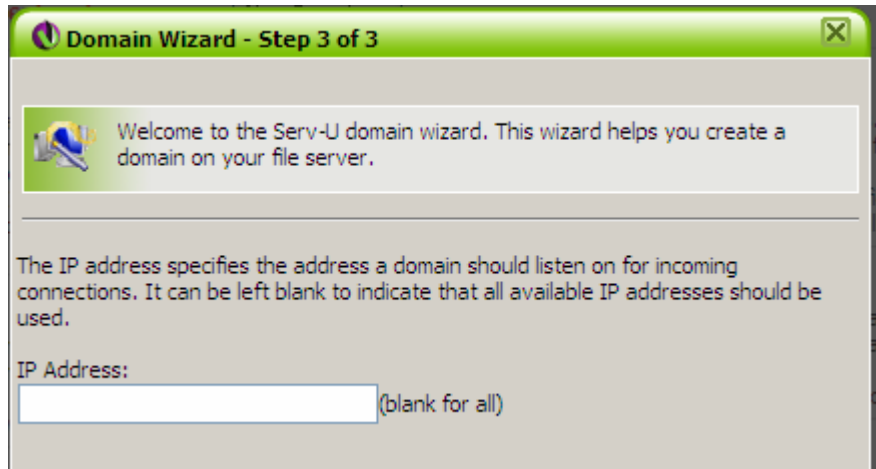


Step 2: The second step in creating a new domain is identifying the protocols this domain should use to provide access to its users. The standard file sharing protocol is FTP (File Transfer Protocol) which operates on the default port of 21. However, any of these ports can be changed to a value of your choosing. It's a good idea to use a port above 1024 if you're going to run the server on a non-default port. Please refer to the documentation on Serv-U Editions for more information on which protocols are supported by each Serv-U Edition. Check the boxes next to the protocols you want the domain to support before clicking **Next** to continue.

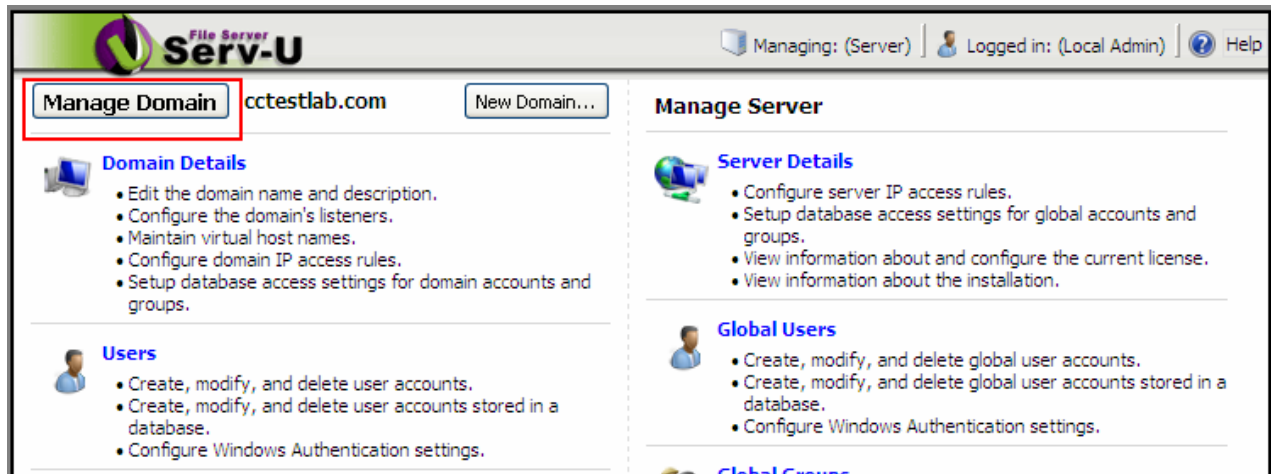


Step 3: The third and final step is to specify the physical address used to connect to this domain. Normally, this is an IP address that users specify in order to find your server on the Internet. Most home users can leave this option blank, which tells Serv-U to use any available IP address on the computer.

Click **Finish** to have Serv-U create your first domain.



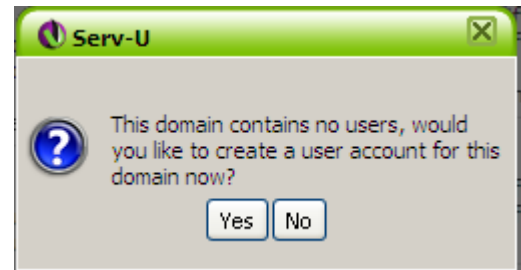
Congratulations! You now have your first domain online. There are additional properties that can be configured for the domain at another time. All domain settings can be accessed from the main Serv-U interface.



Now, you need to create a user account to start sharing files through this domain.



After your first domain is created, you are taken to the user's page of the Management Console and asked if you want to create a new user account with the new user wizard. Clicking **Yes** starts the new user account wizard. This wizard can be run at any time by clicking on the "Wizard" button found on the user account page. There are 4 easy steps to creating a new user account.



Step 1: The first step is to provide a unique user name for the account. This user name is used to begin the authentication process when connecting to the domain. The user name must be unique for this domain, however other domains on your server may have an account with the same user name. To create an anonymous account, specify "anonymous" or "ftp" for the user name. Click **Next** to continue creating the user account.

Step 2: After specifying a unique user name, you must also specify a password for the account. The password is the second piece of information required to authenticate a user when they connect to the domain. In order for another person to connect to this domain, they must know the user name specified in step 1, and this password. It is possible to leave this password blank, however that allows anyone who knows the user name to access your domain. Click **Next** to continue.

Step 3: The third step is specifying a home directory for the account. The home directory is the location on the server's hard drive (or accessible network resource) that the user account is placed in upon successful login. Essentially, it's the location you want the user account to use when sending and receiving files on the server. Clicking the **Browse** button allows you to browse to a location on your hard drive, or it can be typed in manually. If the user is locked in their home directory, they are not able to access files or folders above the directory structure of their home directory. Additionally, the actual location of their home directory is masked and displayed as "/". Click the **Next** button to proceed to the final step.



Step 4: The final step is granting access rights to the user account. Access rights are granted on a per directory basis. However, they can be inherited by all subdirectories contained in an accessible directory. The default access is "Read Only", which means that the user can list files and folders in their home directory and download them. However, they cannot upload files, create new directories, delete files/folders, or rename files/folders. If "Full Access" is selected, the user is able to do all of these things. After the user is created, these access rights can be configured on a more granular basis by editing the user, and selecting the "Directory Access" tab. After selecting the directory access rights, click the **Finish** button to create the user account.



Congratulations! Your Serv-U File Server is now accessible and ready for sharing. You can create more accounts just like this one . Each user can have a different home directory allowing you to share different files with different people. There are many more user configurable options that let you fine-tune an account's access to the server.

